



2020 ANNUAL REPORT



FROM THE EXECUTIVE DIRECTOR

"Flexible pivots" has been our mantra over the past year as we find nimble ways to continue to serve our community in pandemic times. We have moved much into the virtual world, found ways to remain safely open, and most importantly continued to provide high-quality experiences regardless of global setbacks.



I like to use the phrase, "*It's YOUR museum*" because BMMOG has been serving the Fox Cities since 1959, an impressive 61 years now. I am beyond humbled by the warm welcome and generosity of our community since my arrival in September in 2020. My family and I are grateful to many who helped us acclimate to life in the Midwest and especially in our new hometown of Neenah. Thank you!

Likewise, it takes a creative village to uplift a museum and BMMOG has benefited greatly from the community's philanthropic spirit. Highlights for our museum are the great support from our community as we opened in limited capacity on July 2nd, 2020 while migrating several of our programs to a virtual platform. Questions we were constantly asking ourselves: How can we serve our community during this difficult time and what platforms/pathways can we use to connect with our members and our community? Your generosity, affirmation, and support helped uplift our efforts as we navigated these unusual times. We couldn't thrive without the support of our dedicated Board of Directors, staff, volunteers, and members. Our successes are earned in great part to your support and advocacy of YOUR museum!

Your generosity continues to help uplift us to bring new innovations and exhibitions to BMMOG as we begin to open back up after the pandemic. We look forward to seeing you in person for our revamped "Art After Dark" community celebrations, new studio classes, exhibition talks, and summer camps. We need the arts now more than ever to heal and re-center. Let us be that place for you. Come make a trip to YOUR museum soon, we are here for you. See you in the galleries!

Amy G. Moorefield

Executive Director

FROM THE PRESIDENT OF THE BOARD OF DIRECTORS

The persistent COVID-19 pandemic, coupled with political unrest and division, has been an emotional roller coaster for us all. I feel optimistic and pleased to focus my remarks on the positive aspects of change.



Twelve months ago, I attended our last board meeting in person at the museum. Then, Zoom! This simple tool, while not perfect, enabled the museum to function. Even though BMMOG was closed more often than it was open, the board unanimously voted to retain all staff which gave way to creative operations and offerings. Having access to scheduled meeting technology, enabled our committed Board of Directors to govern Bergstrom-Mahler Museum of Glass and select a new Executive Director.

It is undeniably a win to realize that the level of our technology and the remarkable knowledge of our staff is current and up to the task. Technology and tenacity facilitated the staff to meet most of their objectives; to connect with docents, volunteers, collectors, artists, members, financial supporters, and new audiences. Considering the huge challenges caused by the pandemic, BMMOG continues to thrive.

A sincere thank you to all and, in particular, to former Executive Director, Jan Mirenda Smith, Interim/Assistant Director, John B. Timmer, and current Executive Director, Amy G. Moorefield, for a cohesive transition of leadership. While the core foundations of the museum are both its endowment and members, Zoom was the conduit for human interaction. A success story in difficult times, indeed! Let's stay positive.

Michael O. Meilahn

President, Board of Directors

WISCONSIN IDEAS, GLOBAL INFLUENCES

October 10, 2019 – February 22, 2020

This exhibition focused on the wide-reaching impact Wisconsin glass artists have had on shaping the global landscape of contemporary studio glass during the past 70 years. Exploring the many qualities of the medium, these artists have developed meaningful, lasting works for new generations of audiences and collectors.



JEFFREY STENBOM (American)
Lasting Impressions: Delta, 2019
On loan from the Collection of
Jeffrey Stenbom



CHARLES SAVOIE (American, b.1959)
Zanfirico Goblet, 2013
Museum Purchase

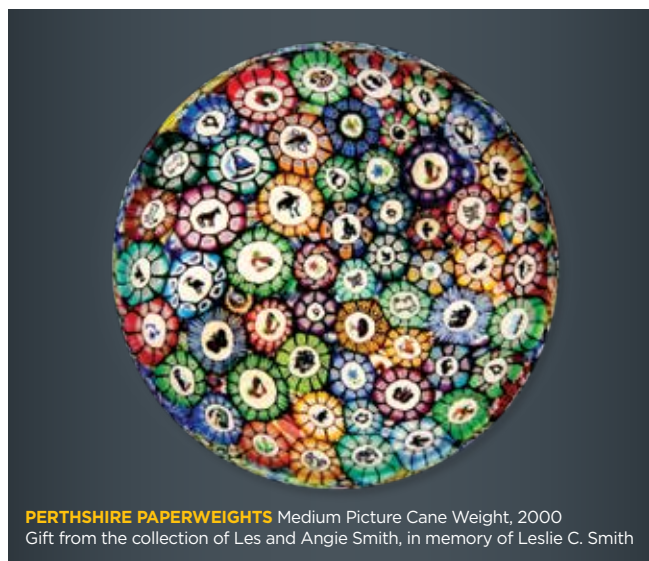
The exhibit included the work of artists Eoin Breadon, Beth Lipman, Chuck Savoie, Deanna Clayton, Keith Clayton, Stephanie Trenchard, Michael Meilahn, Wes and Wesley Hunting, John Littleton and Kate Vogel, Kristin Thielking and Lisa Beth Robinson, Jeffrey Stenbom, Lisa Koch, David Huchthausen, Kent Ipsen, Harvey Littleton, Audrey Handler, Marvin Lipofsky, Gary Beecham, Jeremy Popelka, and Doug Johnson.



HARVEY LITTLETON
(American, 1922-2013)
*Crown Series, Yellow
Vertical Movement*, 1982
On loan from the
Collection of the
Milwaukee Public Museum



Les and Angie Smith



PERTSHIRE PAPERWEIGHTS Medium Picture Cane Weight, 2000
Gift from the collection of Les and Angie Smith, in memory of Leslie C. Smith

PERTSHIRE PAPERWEIGHTS FROM THE COLLECTION OF LES AND ANGIE SMITH

September 28, 2018 – September 20, 2020

View more than 900 weights from the renowned Scottish paperweight maker, Perthshire. This exhibit is the first showing of the gift to Bergstrom-Mahler Museum of Glass from the collection of Les and Angie Smith. Perthshire paperweights

are known for their superb quality that rivals that of 19th century French makers.

Exhibit sponsors include The Parsley Kreilein Bravo Fund to honor collaborative glass artists John Parsley and Peter McDougall.

ACQUISITIONS AND ACCESSIONS



Compagnie des Verreries et
Cristalleries de Baccarat

Newel post finial and standard, ca.1890

Hand-blown, cranberry overlay
faceted newel post finial and
brass standard.

*Estate of Richard Vernon Simpson and
Irene Vitiline Simpson*



Gary Beecham
(American, b.1955)

EX-AP Beecham, 1979

Prototype millefiori paperweight
in clear, blue and white glass.

Gift of David Huchthausen



Michael Taylor (American, b.1944)

Emotional Temperature of the Encounter, 2005

Cut, polished, and laminated sculpture in
clear and translucent blue, green, yellow,
orange and red glass.

Gift of the Robert M. Minkoff Foundation, Ltd.



Martin Blank (American, b.1962)

The Seeker, undated

Clear pipe-formed glass depicting a humanoid form
curled into a ball position and carrying a gold-leaf
adorned boat upon its back.

Gift of Gerald Silverstein



Audrey Handler (American, b.1934)

Hi Honey, I'm Home, 2012

Blown glass bowl and two plates of colored and clear glass
with 24K gold leaf containing separately blown-shaped
fruit. Two sets of sterling silver figures are attached to the
larger dish via museum wax. One antique fruit knife with
silver plated handle signed R. Wallace 1835.

Museum purchase in memory of David H. Woods



Stephen Knapp (American, 1947-2017)

Anam Cara, 2017

Light painting featuring ten individually mounted pieces of dichroic plate glass on VHB board.

Gift of Stephen Knapp Family Trust



Marc Petrovic (American, b.1967)

Untitled, ca.2008

Wall hanging featuring two horizontally stacked shelves, the top containing ten blown translucent clear glass bottles, the bottom containing one translucent clear glass boat trimmed in amber glass, all mounted upon a nautical map.

Gift of Sharon Karmazin



Linda Muldoon (American, b.1942)

Fire in the Water, 2008.

Glass and stone mosaic with gold leaf.

Museum purchase

Daum Frères

Untitled, ca. 1928

Acid etched geometric art deco vase in yellow glass.

Gift of David Huchthausen

David Huchthausen (American, b.1951)
for Milropa Studios

Air Trap Vessel, 1979

Air trap vessel with internal iridescence.

Gift of David Huchthausen

Paul Seide (American)

Innervisions Experimental, 1978

Prototype experimental paperweight in transparent blue glass.

Gift of David Huchthausen



Lino Tagliapietra (b. 1934)

Dinosaur, 2011

Museum purchase with contributions from Lino Tagliapietra, Inc. and the Tagliapietra Family, Roger and Lynn Van Vreede, Jim Schantz and Kim Saul, Bruce Bachmann, Frank H. Douglas, an Anonymous Donor, and the Ronald and Ruthellyn Musil Family Fund within the Community Foundation for the Fox Valley Region.

Art Alliance for Contemporary Glass Wisconsin Artists Series

During 2020, Bergstrom-Mahler Museum of Glass played host to the Art Alliance for Contemporary Glass Wisconsin Artists Series. Initially planned as a season of in-person workshops, lectures and demonstrations, the series shifted to an online format following the museum's temporary closure due to COVID-19. Invited artists included those currently working or having been trained in Wisconsin, including Wes and Wesley Hunting, Deanna Clayton, Lisa Koch, Stephanie Trenchard, Lisa Beth Robinson and Kristin Thielking, Jeff Stenbom and Beth Lipman. All sessions were recorded and made available for access through the museum website.



The Fox Valley Area High School Glass Art Exhibition

Bergstrom-Mahler Museum of Glass strives to expose the community to the versatility of glass while encouraging the creativity of talented young artists in the area. The encouragement of our young people and their development in the arts is crucial to our future economic and social development. We are pleased to exhibit glass art made by high school students in the Fox Valley area. Through creating art in the classroom and at home, students have the opportunity to share their work in a public setting.

This year was a challenging year. The COVID-19 pandemic restricted many glass art-making activities at both the high schools and at our own studio. The students and art teachers from Berlin, Neenah, New London, and Xavier high schools that contributed to this exhibit made the most of their creative time and really came through to make a wonderful show.

The Glass Studio During a Pandemic

Due to the COVID-19 pandemic, all in-person classes were cancelled from March until July. This provided quite the challenge for our Glass Studio Manager, Taylor Moeller-Roy to develop ways to continue educational programming at the museum. Several attempts were made to provide in-home activities that were not related to glass. With much planning and adaptation like smaller class sizes, mandatory masking, special sanitizing protocols, and holding all classes under the main ventilation hood, in-person classes resumed in July.



Later in the year, the popular Art Activity Days were restarted utilizing take-home, pre-fired glass art project kits, and live, online instructional sessions. The kits were a hit, selling an average of 36 per month and shipped to areas as far away as Texas. This collaboration between the Glass Studio Manager and our Visitor Services staff was a much-needed success and created a new outreach program that can be distributed to multiple states throughout the U.S.

SPARK! Programming Goes Virtual!

As part of the SPARK! Alliance of museums and cultural organizations in Wisconsin, the specially trained staff at Bergstrom-Mahler Museum of Glass found a way to continue the monthly program virtually, via online Zoom meetings. Attendance was lighter than past in-person events, but the importance of regularity and continuing the program for those that sought it out was very rewarding. The online conversations which were usually centered around a glass art piece, were lively and entertaining. Kudos to the participants, their caretakers and our staff for adapting to a challenging situation using the latest technology.



COVID-19 Creates a Pause in Popular Community Events

The COVID-19 pandemic affected many aspects of museum programming and that was certainly true for our large-scale community events during 2020. The popular Art After Dark series and the much beloved summer Arts Festival had to be cancelled due to large gathering restrictions. Of course, this was a major disappointment for the museum staff and supporters, as well as the artists and community members who attended these popular events. The future of these events is unshaken, however, and they will be coming back to the community as soon as local health conditions allow.

THE MUSEUM SHOP

The Museum Shop adjusts and expands online sales

As with other areas of the museum's operations during 2020, the COVID-19 pandemic provided unique challenges and opportunities to the Museum Shop. Laureen Endter, the Museum Shop Manager, and her staff of dedicated volunteers forged ahead by creating more online opportunities for buyers to purchase items from the shop representing about 200 artists. They devised a bustling curb-side pick-up system that was especially robust during the holiday shopping season. During that period, they sold over 220 glass icicles and more than 1450 ornaments. During the pandemic period, the Museum Shop team even managed to implement and train a new point of sale system within the shop itself.



VOLUNTEERS

Volunteers are the life force of any great non-profit, especially smaller organizations. As a cultural institution within the Fox Valley community, we understand that we could not provide all of the community programming, beautiful



Docent Patricia Rosenak

exhibitions, nor run our museum shop without the work of our volunteers. We're lucky to have dozens of volunteers that come in early on weekends and stay late to go the extra mile. Each individual person who volunteers with us selflessly uses their special talents and expertise to make the museum a great place to engage, excite, and educate

visitors. Our volunteers divide their time between certain areas of our museum.

Docents help teach people about glass as an artistic medium through leading guided tours and special programs. Curatorial volunteers assist staff with photographing, researching, and documenting the works of glass art in our collection.

The Museum Shop relies on volunteers to keep the shop humming. Our volunteer team does so much more than just wait on customers: They unpack and put tags on incoming merchandise, fulfill corporate orders, inventory the merchandise, make boxes and fold tissue, and dust the thousands of pieces of glass in the shop, in addition to helping our customers find that perfect gift.

Volunteers in The Glass Studio make programming happen by prepping, assisting, and finishing artwork made in The Glass Studio. When we have 40-60 kids running around at events or participants in our memory loss program that need a little extra attention and patience, we can always count on our volunteers to go above and beyond.

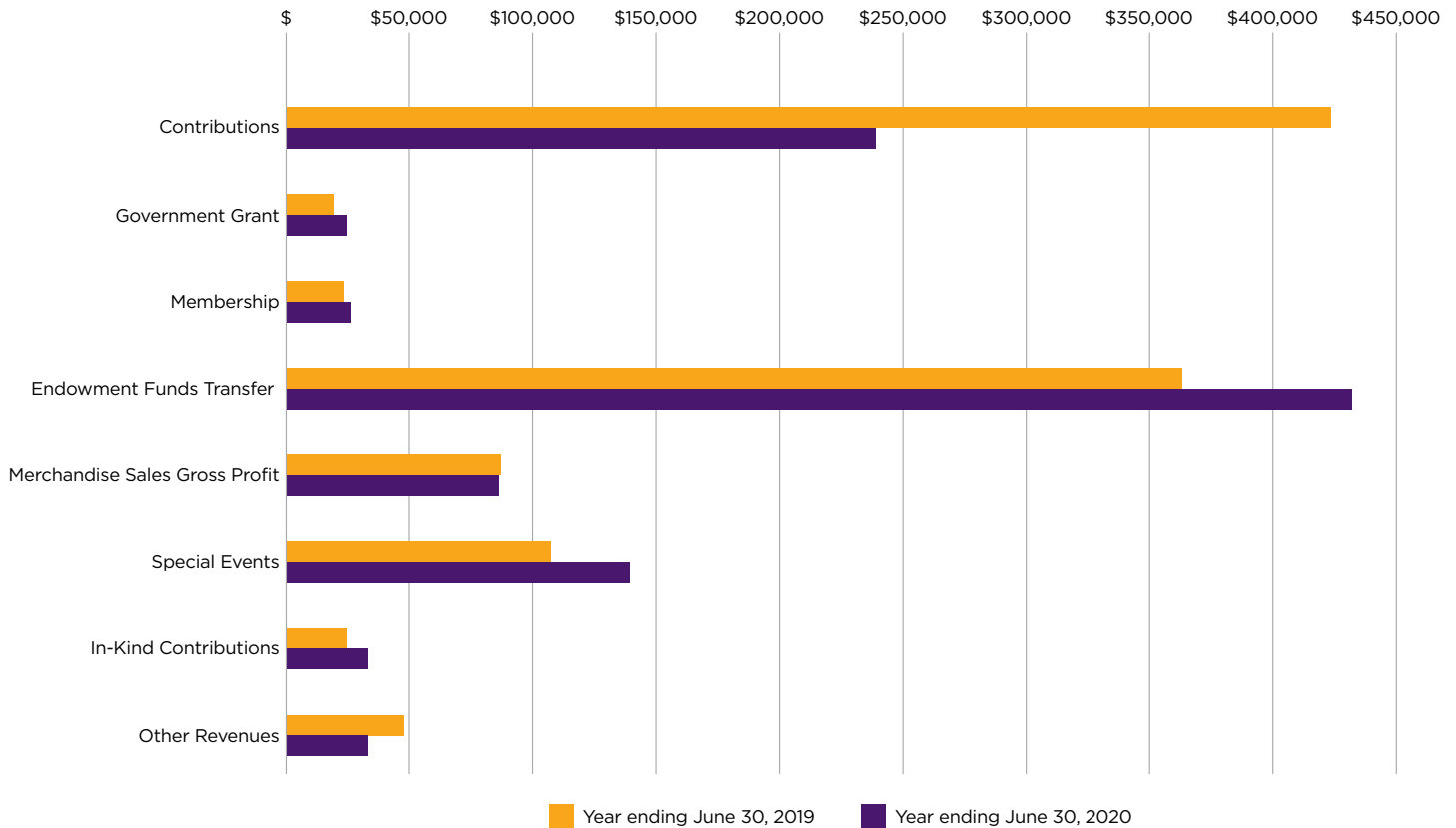
VOLUNTEER SPOTLIGHT

Tom Langkammer started volunteering with us a couple years ago after taking a class at the museum. He started in The Glass Studio helping prepare materials for upcoming classes, camps, art activity days, and more. After only a short time, he's become a star studio assistant. He has now become a major part of Art Activity Days, Art Camps, Scout programming, and more.

Our curator discovered his talents in painting and patching so he also helps in the galleries. His efforts and talents spread to many parts of the museum, even helping out our Executive Director. We are extremely grateful for the help and kindness Tom has shown our museum and we cannot wait to see what staff member ropes him into a project next. Thank you, Tom for all that you do!



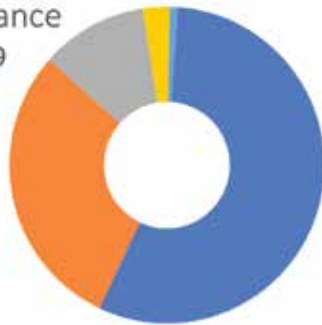
FINANCIALS / YEAR IN REVIEW



Year in Review – Attendance

Total attendance: 11,949

- 6,685 general admission
- 3,529 attended events
- 1,310 attended classes
- 330 attended tours
- 95 attended a class/tour

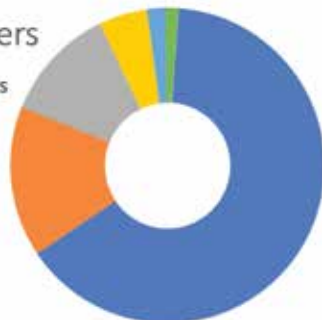


The Financial Impact of the COVID-19 Pandemic

Bergstrom-Mahler Museum of Glass was physically closed to the public from March 17, 2020 through July 1, 2020. We opened in a limited way on July 2nd with a 10 person limit and closed every other day. On July 21st we reopened to our regular daily schedule with limited audience in galleries, shop, and classes. During the time of the closure BMMOG lost revenue from special events, fundraisers, educational programming, memberships, sponsorships, and Museum Shop sales. Expenses continued as we maintained the building, collections, and retained our personnel. Our outstanding organization worked diligently to create virtual content to update and connect with our audience and supporters to continue our mission.

Year in Review – Volunteers

- The Museum Shop : 1532 hours
- The Glass Studio: 369 hours
- Artfest: 281 hours
- Hospitality: 119 hours
- Gallery: 46 hours
- Docents: 30 hours



TOTAL ANNUAL VOLUNTEER VALUE:

\$64,364

Based on rates provided by Independent Sector, independentsector.org



Mattia Salvatore (Italian)
and Marco Salvatore (Italian)

Palm #3, ca.2013
Gift from the collection of
Herbert and Jane Rozoff

JAN MIRENDA SMITH

Executive Director

2006-2020

In August of 2020, we said good bye to Jan Smith as the Executive Director of Bergstrom-Mahler Museum of Glass. Jan began with the museum as Curator from 1989-1999. When she took on the Executive Director commitment, she recognized that in the midst of the contemporary glass movement, BMMOG was “not in the game” even though its roots were embedded in glass. Her vision was to transform the museum from “local to global” recognition.

To commemorate Jan’s leadership and years of dedicated service, a special fund has been created in her honor, the Jan Mirenda Smith Fund to be used specifically for the promotion of Wisconsin glass. This fund will help BMMOG include and promote Wisconsin glass starting with Harvey Littleton at Madison and to embrace all artists and work with ties to the state who have been, or will be, involved in the Contemporary American Glass Movement.



BARBARA KELLY

Board Member, Policy Committee Chair

2010-2021

Our deepest gratitude is paid to Barbara Kelly for her decade plus service on our Board of Directors. Barb has been a leader and advocate in our community for many years and her time spent serving as a Board Member specializing in policy for the museum has been extremely valuable. We wish Barbara well!



DONORS AND SPONSORS

FELLOWSHIP CIRCLE

Community Foundation for the
Fox Valley Region, Inc
Gary and Marge McClananahan
City of Neenah
Roger and Lynn Van Vreede
Charitable Fund *within the Community
Foundation for the Fox Valley Region*

FOUNDER

Art Alliance for Contemporary Glass
Estate of Donna Bailey
BelGioioso Cheese, Inc.
Community First Credit Union
Dr. Donald Henderson
Peggy Morrow Living Trust
North Star Asset Management, Inc.
Jock and Maria Stafford
Sandra and John Valentine
Christine Waterhouse
Robert Zimmerman

PATRON

The Boldt Company
The Leech Charitable Fund
*within the Community Foundation
for the Fox Valley Region*
John Sensenbrenner
Wisconsin Arts Board

BENEFACTOR

Bergstrom Corporation
Huntington T. Block Insurance Agency, Inc.
Rami and Tiffany Kaldas
Oshkosh Area Community Foundation

MASTER

William Bane
Theodore Galloway
Helen Hardt Family Fund
*within the Community Foundation for the Fox
Valley Region*
Horicon Bank
Lloyd and Jan Hughes
Legacy Private Trust Company
Prem Mansukhani and Wei Ying
Bonita Marx and John Laing
Robert R. McCormick Foundation
Rosann and Doug Milius
Miron Construction Co., Inc.
Joseph Pabst and John Schellinger
Betty Richli
Brad and Marion Shepard
Charitable Fund *within the Community
Foundation for the Fox Valley Region*

Gary Underwood
Mary Ellyn Vicksta

JOURNEYMAN

Toni and Brian Chambers
Elizabeth Gard
Ronald and Ruthellyn Musil
Family Fund *within the Community
Foundation for the Fox Valley Region*
The Parsley Kreilein Bravo Fund
Mike and Debbie Rohrkaste
Pat Rosenak
Sally Simon
Raymond Smith
Joan Stonecipher

APPRENTICE

Tom and Kathryn Dreifuerst
Tim and Joan Flaherty
Georgia Pacific
Audrey Handler
The Harp Gallery
Iron Order M.C. Badger Crew Appleton
Jonathan Johns
Barbara and William Kelly
Kimberly-Clark Foundation
*within the Community Foundation for the
Fox Valley Region*
Dr. John P. and Marlene K. Konsek Fund
*within the Community Foundation for the
Fox Valley Region*
Gary Ludwig and Christine Raso
Kathleen Moyer
Lorna Pabst de Acosta
Fred and Susan Sanders

GUILD

Associated Bank
William Banks
Richard and Lori Batley
Peter Bremers
John and Liane Butitta
John Gillen
Gerald Grube
David A. Haase
Marilyn Hetzler
Burton and Libby Hoffman
Catherine and Jeff Holecko
Beth Wenger Johnstone
and Jamie Johnstone
Jean and Steve Karls
City of Manitowoc
Ken and Rebecca Melchert

Seifert Family Fund
*within the Community Foundation for the Fox
Valley Region*
Larry and Rita Sibrack
Jan Smith and Scott Valitchka
Sturtevant & Associates, LLC
Jonathon and Marjorie Sutter
John and Diane Timmer
Nancy Varah and Lea Goynes
Michael and Stephanie Vrabec
Family Fund *within the Community
Foundation for the Fox Valley Region*

CONTRIBUTOR

Amazon Smile Foundation
Amcor
Lauri Asbury
Bob Banford
Terry and Kimberly Barrett
Priscilla and Anthony Beadell
Judy and Bruce Bendoff
Michael and Paula Bennett
Best Western Premier
Bridgewood Resort Hotel
Cathy Branch Stebbins
Jennifer and Michael Breining
Jeffrey and Cynthia Buchta
Kristin Caravella
Ellen Chernoff
Doug and Sheena Connors Family
David Drexler
Jennifer and Tim Elwood
Diane Eparvier
EPIC Specialty Benefits
Helen Evans
Laurie Friedman-Fannin
Roy Fine
Dawn Fisher
Patricia Fisk
Mary Florek
Ngosong Fonkem
Fox Valley Bonsai Society
Arnold Frenay
Peggy Galloway
Beth Gehl
Julianne and Jack Giese
Carol Goldstein
Warren and Deborah Griffith
Susan and Anthony Grosch
Eric and Cheryl Grunwald
Lynn and Cliff Halley
Bev and Bob Harrington
Donna Hartman
Julie Haurykiewicz
Marti Hemwell

Kay Hendrickson
 Melissa Huempfer and Joseph Sherry
 Chris Juedemann
 Eric Jump
 Roxy Jungwirth
 Frank and Kim Kearny
 Lori Kelleher
 Walt and Margaret Koskinen
 Jon Kuhn
 Loree Johnston LaChey and Steve LaChey
 Mark and Susie Lange
 Thomas and Kathryn Langkammer
 John Littleton and Kate Vogel
 Margaret Lorenz
 Lee W. Lynch
 Jann and Bill McBride
 John and Susan McFadden
 Michael and Jane Meilahn
 Tim and Ann Moe
 Nance Moeller-Roy
 Jim and Connie Morgenstern
 Susan Morrissey

Anne Mortell and Dan Baird
 Philip and Mara Munroe
 Anne Neer
 Dr. John and Sandra Parsley
 Joan Parsley and Dr. Sylvester Kreilein
 David H. and Suzanne J. Peck
 Family Fund *within the Community*
 Foundation for the Fox Valley Region
 Allan Port
 Mary Poulson
 Thomas Prosser
 Randall's Auto Haus Inc
 Remley Family Fund,
a fund of the Greater Green Bay
Community Foundation
 Dana Reneau
 Chris Rifkin
 Paulette Rosch
 Christa Sanders
 Mae Sanford
 Catherine Sawinski
 Dorothy Saxe

Wayne Sigl and Leesa Erickson
 Charlotte Sigman
 Sharon Solomon
 Susan Soy and Jack Jordan
 Cathy Stebbins
 Jen Stevenson and Lori Schwager
 Sheryl Stidham-Gebert
 Clariss Techlow
 Bobbie and Len Tenner
 Alan and Helen Thornton
 Claudia Tibbetts
 Donald and Janet Turner
 Roy and Lucy Valitchka
 Arthur and Rose Walker
 Robert and Marcia Weissman
 Bridget Welch
 Barbara Westhofen
 Sofia Wilson
 Womans Tuesday Club
 Susan Wood
 Randie and Jack Zellmer

Our deep appreciation and thanks to Bergstrom-Mahler Museum of Glass seasonal sponsors



A special thank you to our vibrant, local community foundations and organizations



DONORS AND SPONSORS CONTINUED

IN-KIND

15dots, LLC.
A2Z Design, LLC
Amazon Smiles Foundation
Appleton Monthly
Associated Trust Company
Basecamp
Best Western Premier
Bridgewood Resort Hotel
The Boldt Company
Beth Cox
Jennifer Elwood
Fred Astaire Dance Studio
GLOtube
Google

Goya Contemporary Gallery
Graphics DNA
Great Big Graphics LLC
Gunderson Family Companies
Hunting Studio Glass
Incredible Edibles
Beth Wenger Johnstone
Krueger True Value
Tom Langkammer
Robin Lehman
Lion's Tail Brewing Co. & Tap Room
Mad Art
Jann and Bill McBride
Michael Meilahn
Mile of Music
Rosann and Doug Milius

Mobilia Gallery and Joyce Scott
Taylor Moeller-Roy
N.E.W. Printing
RanderCom Inc.
Sara Rezin
Riester & Schnell, Inc.
Jan Smith
Kelly Stoll
ThedaCare at Work
John Timmer
Mayauel Ward
Wells Fargo
Xtreme Clean of the Fox Cities, LLC.

STAFF



AMY MOOREFIELD
Executive Director



JOHN TIMMER
Assistant Director



CASEY EICHHORN
Curator of Collections
and Exhibitions



LAUREEN ENDTER
The Museum Shop
Manager



TAYLOR MOELLER-ROY
The Glass Studio
Manager



KELLY STOLL
Executive &
Development Assistant

JENNIFER ELWOOD
Visitor Services
Team Member

ROXY JUNGWIRTH
Visitor Services
Team Member

NEW 2021 STAFF

JIM WEIDERT
Senior Marketing
& Public Relations
Manager

CASEY NASH
Facilities Coordinator
& Preparator

LYNNE PHILLIPS
Visitor Services
Supervisor



René Lalique (1860-1945)
Ceylan, ca. 1924
Gift to the Mahler Collection
from Pauline Mahler Stafford

MEMBERS

FELLOWSHIP

BelGioioso Cheese, Inc.
Judy and Bruce Bendoff
Bergstrom Automotive of Neenah
Patricia Boldt
Tom and Renee Boldt
Community First Credit Union
Gracia Drew
Judson and Mary Beth Fowler
Dr. Donald Henderson
Barbara and William Kelly
Bonita Marx and John Laing
Gary McClanahan
Geoffrey Penn and North Star Asset Management, Inc.
Fred and Caroline Schwertfeger
Jan Smith and Scott Valitchka
Jock and Maria Stafford
Sandra and John Valentine
Roger and Lynn Van Vreede
Christine Waterhouse

PARTNER

Sharon and John Amdall
Errico and Patrizia Auricchio
Timothy and Joan Flaherty
Theodore Galloway
Gary Ludwig and Christine Raso
Michael and Jane Meilahn
Ken and Rebecca Melchert
Rosann and Doug Milius
Gordon Park
Donna and Barry Rice
John Sensenbrenner
Raymond Smith

APPRENTICE

Lauri Asbury
Barb Aylward
John and Dianne Bergstrom
Richard Bergstrom
Tim Bergstrom
Kathryn and Tom Dreifuerst
Harlan and Olivia Fischer
Mr. and Mrs. Patrick Galloway
Henry Griesbach
Audrey Handler
Gregory Hanson and Marcie Stone
Bev and Bob Harrington
Sally Henshaw
Burton L. and Libby Hoffman
Lloyd and Jan Hughes
Lindgren-Galloway Family
Robert and Judy Mickelson
Tim and Ann Moe

Mr. Wayne Sigl and Mrs. Leesa Erickson
Merrill and Leora Vallender
Greg and Peggy Wendt
Randie and Jack Zellmer

ASSOCIATE

Mark Baetke and Diane Montgomery
William Bane
Richard and Lori Batley
Priscilla and Anthony Beadell
Christopher and Kristen Bergstrom
Terry and Jan Bigalke
Nyke Block
Dr. and Mrs. John Butitta
Mr. and Mrs. Richard Carlson
Mary Helen and Peter Casper
Benjamin Clark and L.H. Selman, Ltd.
Jon Clark

Doug and Sheena Conners
Sten and Maryann Crissey
Casey Eichhorn
Eileen Ellis
Jennifer and Tim Elwood
Laureen and Steve Endter
Jere Gibber and J.G. Harrington
William and Ethel Gofen
William Griffith
David A. Haase
Lynn and Cliff Halley
Mame and Daniel Heaney
Marilyn Hetzler
Catherine and Jeffrey Holecko
Jonathan Johns
Roxy Jungwirth
Sharon Karmazin
Robert and Jacquie Kern
Walter and Margaret Koskinen
Keith Lange
Thomas and Kathryn Langkammer
Lee W. Lynch
Ruth Mansukhani-Brand
and Ishwar Mansukhani
Phyllis Matczak
Taylor Moeller-Roy
Amy G. Moorefield
Jim and Connie Morgenstern
Walter and Jane Myers
Casey Nash
Joan Parsley and Dr. Sylvester Kreilein
Lynne Phillips
Mike and Debbie Rohrkaste
Pat Rosenak
Christa Sanders
Michael and Erica SanDretto
Lawrence Sawyer and Debra McDowall

Reid and Patricia Schoonover
Brett and Elizabeth Schwantes
Reba Shotwell
Sally Simon
Michael Steffen
Jen Stevenson and Lori Schwager
Kelly and Jason Stoll
Jonathon and Marjorie Sutter
John and Diane Timmer
Drs. Peter and Cari Ullrich
Gary Underwood
Mary Elyn and Dave Vicksta
Jim and Linda Weidert
Marshall and Lita Weinstein
Kelly Wing
Bill and Beth Wyman
Kathy and Chris Ziminski

FAMILY

Carolyn and Michael Aita
Terri Auchter
Curt and Kathy Baltz
Terry and Kimberly Barrett
Sarah Bauer and Jeff Heimerman
Grant and Susan Birtch
Dee and Dickson Brown
Jennifer Brunette and Family
Ken and Jan Brusda
Jeffrey and Cynthia Buchta
Lori Burr
Toni and Brian Chambers
Thomas and Paula Christensen
Rick and Judy Conne
Dan and De Dalum
Lynn and Catherine Davis
Alyssa and Brian Demerath
Laura Deming and Jack Stubbs
Sue and Rick Dennis
Paul and Karen Dunlop
Pat Filzen
Ann and Jeff Gentz
Bruce and Kathryn Giangiorgi
Julianne and Jack Giese
Elizabeth and Jerry Ginke
Phyllis Goodenough
Deborah and Warren Griffith
John and Toby Hawley
Gary and Linda Hoehne
Dan and Cathy Huber
Jean and Steve Karls
Frank and Kim Kearny
Lawrence and Sylvia Kruger
Loree Johnston LaChey and Steve LaChey
Drs. Bradley and Barbara Lauderdale
Dan and Becky Luett

Colin and Deborah Mahoney
Prem Mansukhani and Wei Ying
Jann and Bill McBride
John and Susan McFadden
Melanie and J. Joseph Miller
Tom and Carol Morley
Anne Mortell and Dan Baird
Judith and Tom Mueller
Ronald and Ruthellyn Musil
Nancy and Roger Orlady
Joseph Pabst and John Schellinger
John and Kathy Peterson
Frank and Nicole Podojil
Sara and Scott Rezin
Chickie and Steve Rosen
Walter and Amelia Rugland
Fred and Sharon Schomer
Sue and Doug Schuettpelz
Dr. and Mrs. Edward Sheldon
Ilse and Luke Sokel
Susan Soy and Jack Jordan
Danae Steele and Marijke van Roojen
Wayne and Ruth Streck
Greg and Erica Suchyta
Terry and Ruth Tessier
Tegwen and Matt Thalmann
Donald and Janet Turner
Roy and Lucille Valitchka
Terye and Royce Van Sanford
Kay Villa and Stephen Soileau
Mary Jane Waite
Fred and Maureen Winer
Dr. Leroy and Mrs. Marlene Zacher
Dr. Jeffrey and Mrs. Bonita Zdrake

INDIVIDUAL

Simon Abrahms
Nancy Alfano
Abbey Aylward
Georgia Bailey
William Banks
William Bardens
Ian Bartlett
Marjorie Becker
Richard Borgquist
Kathy Brost
Trini Burich
Clark Caflisch
Michael Castle
Susan Conzelman
Becki Cunningham
Jacklyn Dickens
Jeremie Draper
Elizabeth Drew
Kim Dworak

Wendy Eagon
Julie Eiden
Dr. Martha Fehr
Donald Formigli
Eva Forslund
Harold Ginke, III
Carol Goldstein
Carolyn Grigsby
Kelly Hanink
Julie Haurykiewicz
Erika Heuel
Joseph Jankowsky
Donna Jedryczka
Barbara Kimps
Katherine Kottke
Deborah Kremer
Bambi Lint
Shari Lloyd
June Luett
Nance Moeller-Roy
Susan Morrissey
Peggy Murphy
Richard Naffier
Laurel Nobbe
Susan Radtke
Kolleen Rathburn
Pam Reinhold
Dana Reneau
Cynthia Rieck
Brandy Ritchie
Lynn Ann Sauby
Mike Schanke
Mary Schulz
Cathy Sebwroski
Ashlee Sell
Karla Spinks
Jenny Staples
Frances Steele
Kevin Stier
Kathy Stout
Terry Sutter
Barbara Uehling
Lynde Uihlein
Bridget Welch
Robert Zimmerman

SENIOR

Rosebud Adams
Donna Jean Atassi
Rose Barnstable
Marion Bates
Alice Bauer
Carolyn Bauer
Kim Becker
Susan Blair

Sharon Brooker
Sally Brotski
Jane Campbell
Lamont Carpenter
Ruth Carpenter
Laureen Cherkasky
Mary Clauss
Judy Coenen-Eichhorn
Gail Dolan
Miriam Douglass
Cathi Dziedzic
Diane Eparvier
Helen M. Evans
Kristin Falk
Laurie Friedman-Fannin
Mary Jo Feldmann
Mary Florek
Cindee Garnett
Jill Geniesse
Elizabeth Gibson
John Gillen
Christine Grunwald
Jerry Grunwald
Mary Guhl
Jan Gustison
Kathleen Hamilton
Lynne Hart
Kendra Heckmann
Kay Hendrickson
Mildred Herder
Jane Jonscher
Patricia Julius
Mary Jean Kasper
Gail Kedzierski
Margaret Kersten
Joanne La Poma
James Lange
Julia Lange
Alan Lareau
Marianne Levin
Sherry Lloyd
Margaret Lorenz
Paul McAvoy
William Meeker
Patricia Meier
Laurie Ann Meyer
Lorice Meyer
Stefanie Moritz
Laura Muinde
Victoria Mulder
Margaret Murphy
Anne Neer
Beth Olson
Nancy Ann Olsta
Jean Orbison

MEMBERS

Susan Otto
Mary Jo Pauly
Eugene Peiter
Kristine Pierce
Patricia L. Pierce
William Pitt
Mary Poulson
David Price
Susan Prince
Michael Puls
Peg Rasmussen
Karla Repta
Greta Rogers
Marilyn Rosenfeld
Ellyn Sachs
Mae Sanford
Teresa Schulz
Charlotte Sigman
Edwin Simon

Donna Smith
Marcella Staffeld
Dr. Joan Naomi Steiner
Cheryl Swiadon
Clariss J. Techlow
Dr. Helen Raye Thrasher
Sandra Torrielli
James Turner
Sue Vine
Linda Voss
Michael Wegner
Mary Jo Weidert
Barb Wenzel
Mary Jo Widener
Susan Wilson
Kay Wisnefske
Susan Wood
Mory Wrase
Elina Yoseloff

Ann Zarnoth
Pamela Zielinski
Gail Zierler
Andrea Zinga

IN MEMORIAM

Mrs. Frances Bachman
Mr. Joseph Bachman
Oscar Boldt
Walter Drew
Philip Edelman
Peggy Galloway
Cullen Henshaw
Wilma Lieber
John Martner
Marge McClanahan
Robert Minkoff
Mrs. Mary Sensenbrenner
Gerald Silverstein



Toots Zynsky (American, b.1951)
Sculptural Vessel, ca.2004
Gift from the collection of
Herbert and Jane Rozoff

BOLD VISION | COMMUNITY TREASURE

In the coming year, we will begin to move forward as a team in a variety of strategic ways in creating a new vision that embraces the community.

FUTURE DIRECTION: Bold Discoveries in Glass for All

CALL TO ACTION: The center for extraordinary glass experiences, the Bergstrom Mahler Museum of Glass offers engaging discoveries to **ignite** creativity, **spark** fun and **inspire** learning for all.

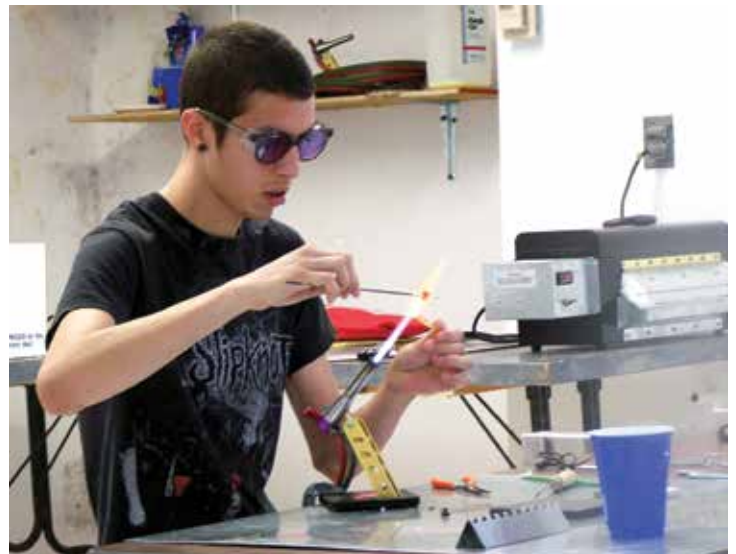
Accomplished through:

- Creation of extraordinary glass experiences and community-based projects with artists of diverse cultural backgrounds.
- Listening to our community: Developing deep and mutually beneficial partnerships with stakeholders in our community as well as on the national level to provide new experiences for all.
- Quality Fun-Raising: Having fun and trying new things by rebooting our arts festival for 2022 as well as a new Art After Dark series among others with community partnerships.
- Epic Friend-Raising: Finding new and unique ways to celebrate our members including a special artful online auction and behind the scenes opportunities.

Most importantly, our future success is in many ways due to your support and feedback Please stay tuned for future innovations and reach out to me anytime at moorefield@bmmglass.com.

We are grateful for you!

Amy G. Moorefield
Executive Director
Bergstrom-Mahler Museum of Glass



BOARD OF DIRECTORS

AS OF JUNE 2020

Michael "Mick" Meilahn
(President)

Prem Mansukhani
(Vice President)

Kathryn Dreifuert
(Secretary)

Walter Koskinen
(Treasurer)

Simon Abrahms
Dr. Kimberly Barrett
Kathleen A. Brost
Jon F. Clark
Rick Conne
Roy Fine

Mayor Dean Kaufert
Ex-officio Mayor of Neenah
Barbara Kelly
Amy Pietsch
Fred C. Schwertfeger
Stephanie Spellman
(Aldersperson Representative)
Marjorie Sutter

OUR MISSION

Engage, excite, and educate our
regional and global audiences
using our world renowned glass
paperweights, glass collections,
and changing exhibitions.

OUR VISION

The Place for Exciting Discoveries in Glass!



165 NORTH PARK AVENUE • NEENAH, WI 54956
TELEPHONE: 920.751.4658 • BMMGLASS.COM